

# Arace Supply Switch and Outlet Boxes

New Work Nail-on, Switch and Outlet Box

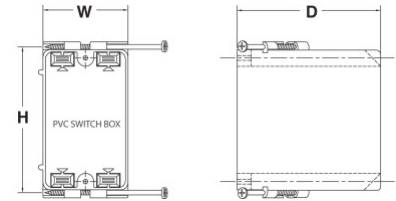


Our New Work, nail-on switch and outlet boxes are ideal for residential and light commercial installations. Each box is equipped with angled nails for secure mounting on studs, ensuring stability and ease of installation. Designed to accommodate all standard devices and switches, these boxes offer versatility and convenience.

- ETL Listed
- ETL 2 Hour Fire Rated for in-wall use
- Conforms to UL 514-C
- Nails included
- Long lasting and cost saving

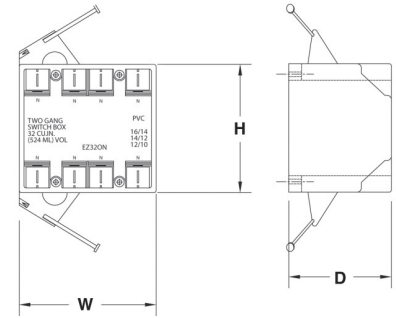
## One-Gang

Ctn Qty	Dimensions (in)			Cu. In
	L	W	D	
100	3-3/4	2-1/4	2-7/8	18
100	3-7/8	2-1/4	3-1/4	20
100	3-3/4	2-1/4	3-1/2	22



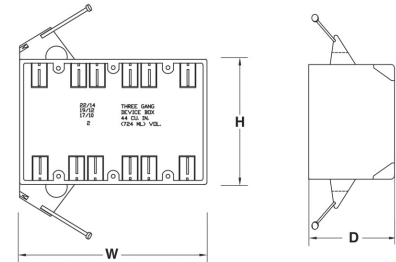
## Two-Gang

Ctn Qty	Dimensions (in)			Cu. In
	L	W	D	
50	3-3/4	4	3	32



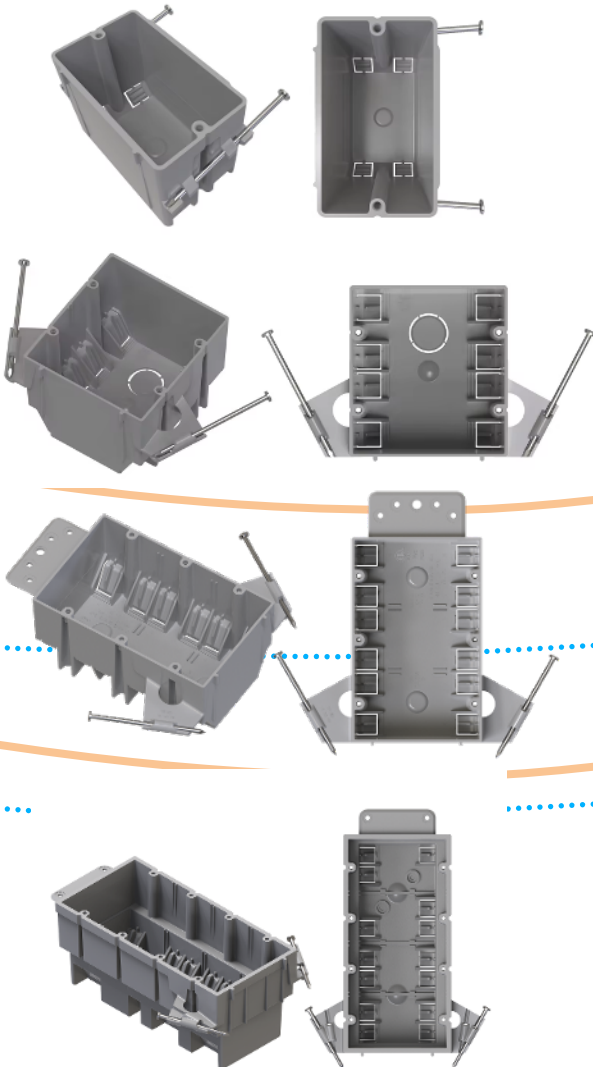
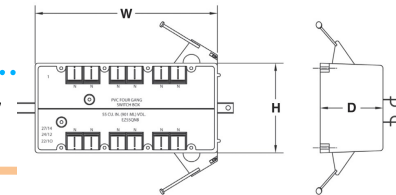
## Three-Gang

Ctn Qty	Dimensions (in)			Cu. In
	L	W	D	
30	5-5/8	3-3/4	2-11/16	44



## Four-Gang

Ctn Qty	Dimensions (in)			Cu. In
	L	W	D	
25	3.5	7.8	4.5	64



ARACE SUPPLY

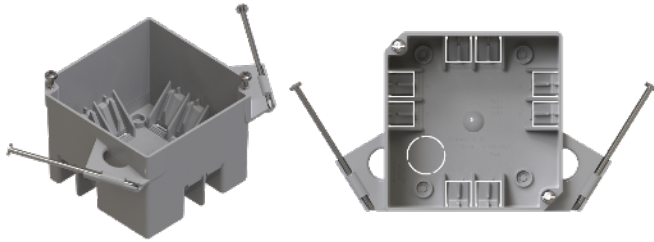
# Arace Supply Switch and Outlet Boxes

New Work Nail-on, Switch and Outlet Box



Our Square New Work, nail-on switch and outlet boxes are perfect for residential and light commercial projects. These boxes come with angled nails for secure and easy mounting on studs. Designed to accommodate all standard devices and switches, they offer flexibility and ease of use.

- ETL Listed
- ETL 2 Hour Fire Rated for in-wall use
- Conforms to UL 514-C
- Nails included
- Long lasting and cost saving



## Square

Ctn Qty	Dimensions (in)			Cu. In
	L	W	D	
50	4	4	2-5/8	32

