

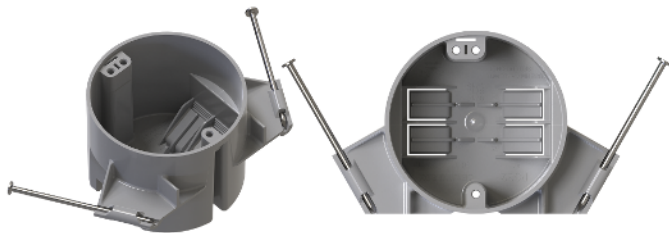
Arace Supply Switch and Outlet Boxes

New Work Ceiling Boxes



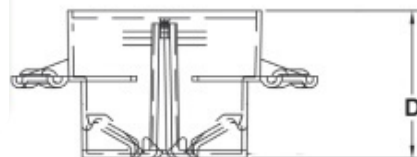
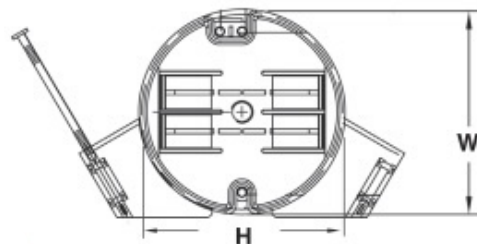
Our Nail-On Ceiling Boxes are designed for secure and efficient installation in residential and light commercial projects. These boxes are ideal for mounting ceiling fixtures, fans, and other overhead electrical devices. Each box comes with pre-installed nails angled for secure attachment to ceiling joists, ensuring stability and ease of installation.

- ETL Listed
- ETL 2 Hour Fire Rated for in-wall and ceiling use
- Conforms to UL 514-C
- Grounding lug attached
- Nails included
- Sturdy construction
- Long lasting and cost saving



Ceiling

Ctn Qty	Dimensions (in)		(Cu. In)
	Diameter	Depth	
75	3	2-3/4	18
75	4	2-1/4	20



Arace Supply Switch and Outlet Boxes

Old Work Ceiling Boxes

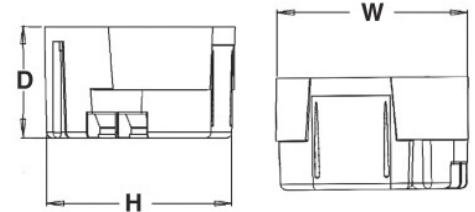


Our Old Work Ceiling Boxes are specifically designed for renovation and retrofit projects in residential and light commercial settings. These boxes are perfect for installing ceiling fixtures, fans, and other overhead electrical devices in existing ceilings. Featuring secure mounting tabs, they allow for easy installation without the need to access the joists, making them an ideal solution for retrofit applications.

- ETL Listed
- ETL 2 Hour Fire Rated for in-wall and ceiling use
- Conforms to UL 514-C
- Secure mounting tabs
- Long lasting and cost saving

Ceiling

Ctn Qty	Dimensions (in)		(Cu. In)
	Diameter	Depth	
75	4-1/4	2-1/3	18



Adjustable Hanger Ceiling Boxes



Our Adjustable Hanger Ceiling Boxes are designed for versatile installation in both new construction and retrofit projects. These boxes feature an adjustable hanger system that allows for precise positioning and depth adjustment to accommodate varying ceiling thicknesses and fixture requirements. Bar adjusts between 18-1/4" to 26-3/4" Ideal for mounting ceiling fixtures, fans, and other overhead devices, they provide a flexible and secure solution for any ceiling installation..

- ETL Listed
- ETL 2 Hour Fire Rated for in-wall and ceiling use
- Conforms to UL 514-C
- Grounding lug attached
- Adjustable hanger system
- Sturdy construction
- Long lasting and cost saving

Ceiling

Ctn Qty	Dimensions (in)		(Cu. In)
	Diameter	Depth	
75	4	2-1/4	18

